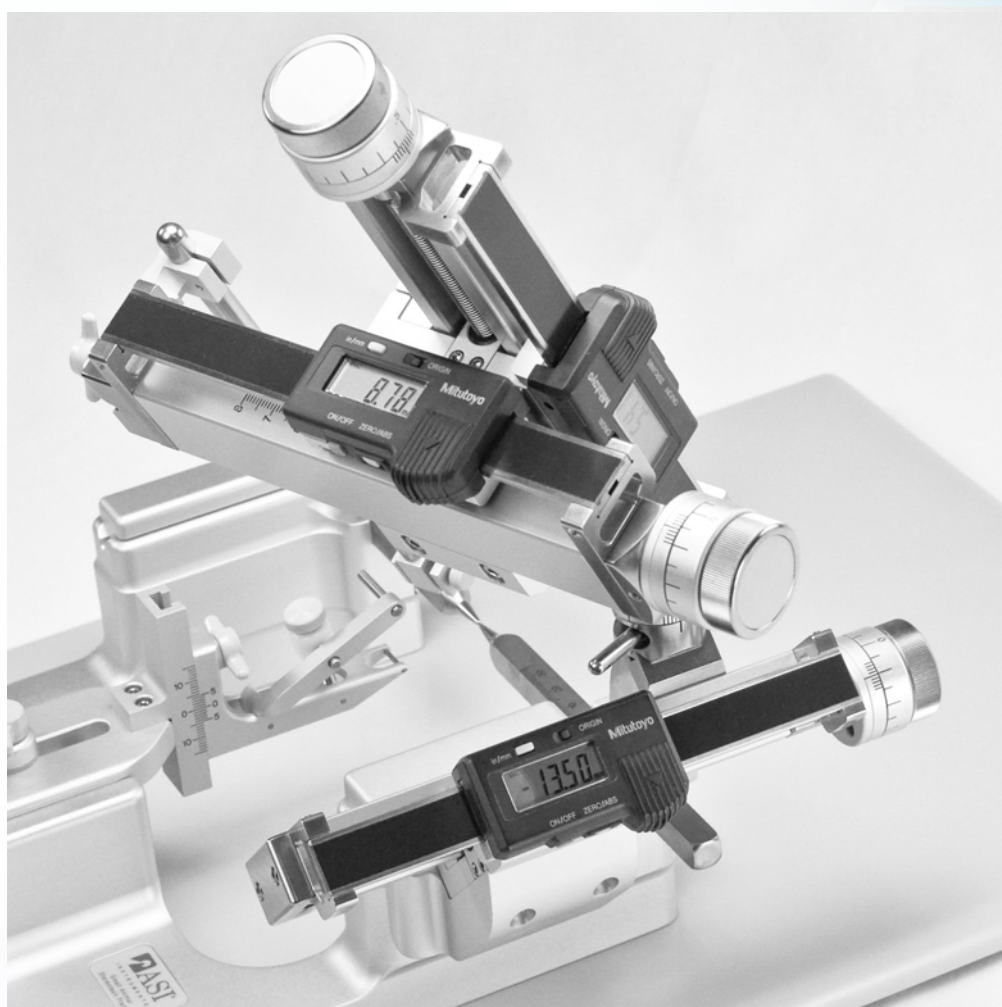




Product Catalog 2024

INSTRUMENTATION FOR LIFE SCIENCE RESEARCH



Animal
Handling Systems
pg 6

Rodent
Brain Matrices
pg 10

Stereotaxic
Systems
pg 14

Multi-Barrel
Pipettes
pg 18

Life Sciences research tools
Designed by scientists, for scientists
Unequaled in performance
Unequaled in value

Asi-Instruments.com

 Products that Solve Real Problems
in Real Research



Welcome to ASI Instruments. The company that designs and manufactures world class instruments for the Life Science / Biomedical Research Community.

”Designed by Scientists for Scientists.”
Our products have earned the respect of the most demanding users in labs around the world. Products that set trends. Products that are backed by the best warranty in the business.

”I encourage you to experience the difference yourself.”



Chris Chiodo / CEO and Founder

PRODUCT CATALOG 2024

CONTENT



Preclinical Imaging
Instrumentation **4**



Rodent Brain
Matrices **10**



Large Brain &
Tissue Matrices **11**



Stereotaxic
Systems **14**



Stereotaxic
Micromanipulators
& Accessories **16**



Micromanipulators
& Accessories **17**




Multi-Barrel
Pipettes **18**



Microdrive
Systems **19**

All Products are
Designed and Built
in the USA



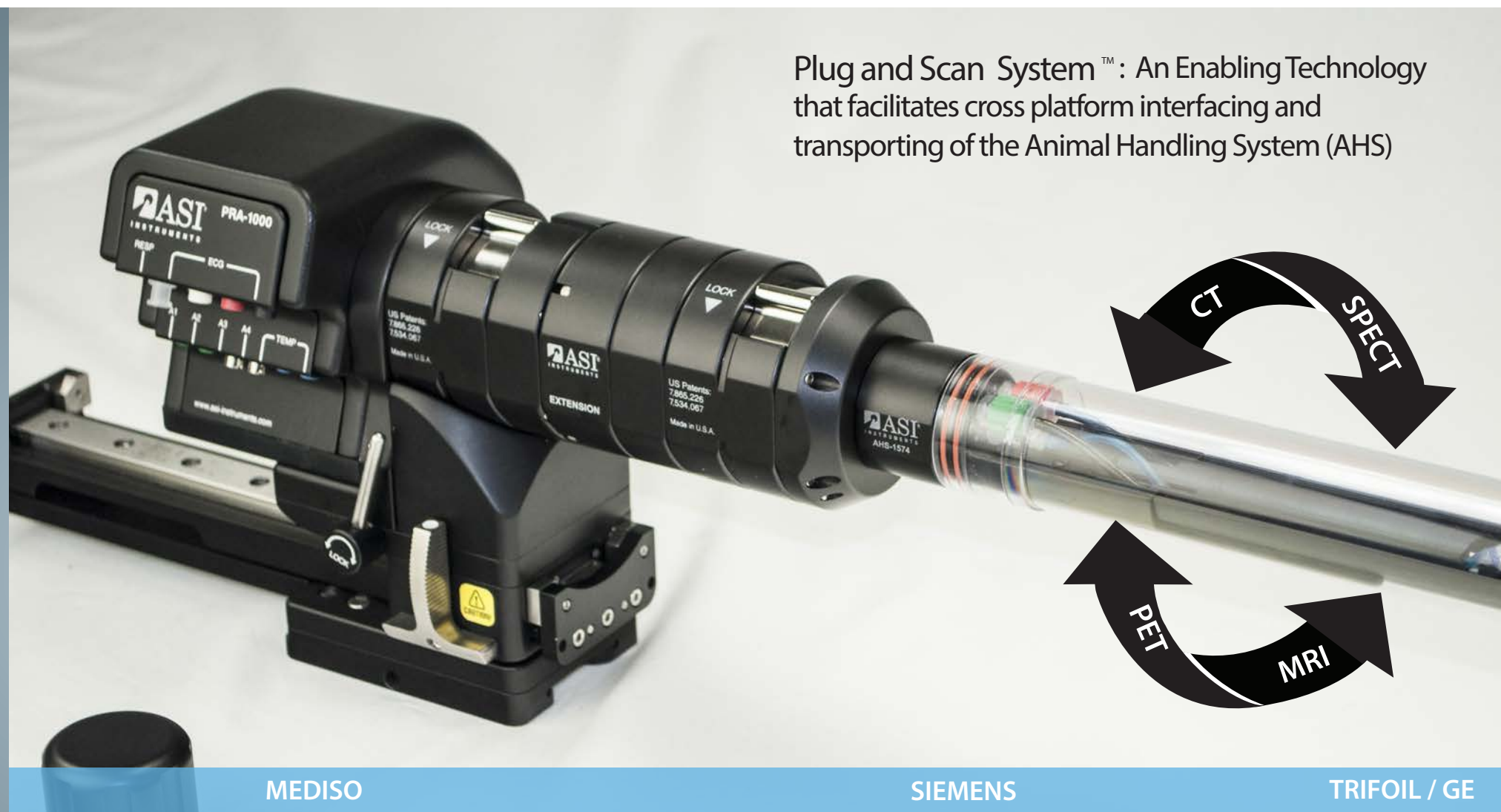
 ASI uses the most advanced
techniques and facilities to develop
and manufacture an expanding,
innovative, patented line of products

PRECLINICAL IMAGING

In the fall of 2011 we introduced to the Scientific Imaging Community, a new innovative research tool: the **ANIMAL MANAGEMENT SYSTEM (AMS)**. This is a multiple component, **PATENTED** suite of technologies for true high throughput, preclinical imaging in a **MULTI-MODALITY** laboratory environment. These instruments were created to solve the persistent issues associated with **MULTI-MODALITY IMAGING: REPEATABLE SPECIMEN BODY POSTIONING** day after day for longitudinal studies, **CONTAINMENT FOR BSL-2 WORK** AND **EASY AND QUICK LOADING** of animal onto the bed. Our methodology assists the researcher in **TRANSPORTING** and interfacing the animal in a highly reproducible manner to a variety of different scanners / modalities including: **CT, PET, SPECT, MRI AND OPTICAL (FTM)**. One of the core foundational advancements is our unique **COUPLING SYSTEM** which allows for the our novel bed to interface to any research tool if given the proper positioning receiver assembly.

➡ **PATENTED**
SUITE OF TECHNOLOGIES
DESIGNED
FOR TRUE HIGH
THROUGHPUT
PRECLINICAL IMAGING

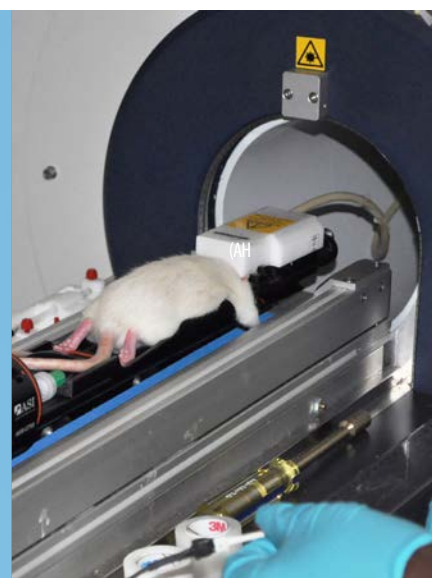
Plug and Scan System™ : An Enabling Technology that facilitates cross platform interfacing and transporting of the Animal Handling System (AHS)



BRUKER

AGILENT (VARIAN)

TRIFOIL



MEDISO

SIEMENS

TRIFOIL / GE



ANIMAL HANDLING SYSTEMS

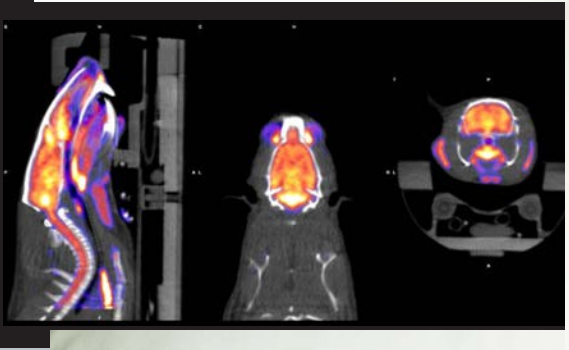
AHS-1574-M3 Animal Handling System, Mouse Bed #3 w/ Containment System, 40mm Coupling System, Ships w/ Filters for BSL-2 Containment Protocol, Replacement O-ring Kit, Bench Top Gas Connector	\$7393
AHS-1574-M2 Animal Handling System, Mouse Bed #2 w/ Containment System, 40mm Coupling System, Ships w/ Filters for BSL-2 Containment Protocol, Replacement O-ring Kit, Bench Top Gas Connector	\$7393
AHS-2750-M1 Animal Handling System, Mouse Bed #1 w/ Containment System, 70mm Coupling System, Ships w/ Filters for BSL-2 Containment Protocol, Replacement O-ring Kit, Bench Top Gas Connector	\$7393
AHS-2750-PE Animal Handling System, PerkinElmer Bed w/ out Containment System, 70mm Coupling System, Unit accepts PE Mouse Cassette, Replacement O-ring Kit, Bench Top Gas Connector	\$7260
AHS-2750-R1 Animal Handling System, Rat Bed #1 w/ Containment System, 70mm Coupling System, Ships w/ Filters for BSL-2 Containment Protocol, Replacement O-ring Kit, Bench Top Gas Connector	\$7393
PRA-1000 Positioning Receiver Assembly for GE, Locus CT, 70mm Coupling System, Ships w/ Cables to Connect to all Physiological Support	\$8385
PRA-1000-M Positioning Receiver Assembly for Mediso Multi-Modality Scanner, Nano CT-PET, 70mm Coupling System, Ships w/ Cables to Connect all Physiological Support	\$8954
PRA-2000 Positioning Receiver Assembly for SIEMENS, Inveon CT, Dedicated PET, and Inveon SPECT - CT Scanners, 70mm Coupling System, Ships w/ Cables to Connect to all Physiological Support	\$8385
PRA-2000-MM Positioning Receiver Assembly for SIEMENS, Docked PET - SPECT - CT and PET - SPECT - CT Scanners, 70mm Coupling System, Ships w/ Cables to Connect to all Physiological Support	\$10,575
PRA-3000-324 Positioning Receiver Assembly for GE eXplore CT-120, MicroCT Scanners, 70mm Coupling System, Ships w/ Cables to Connect to all Physiological Support	\$9777
PRA-3000-642 Positioning Receiver Assembly for GE eXplore, speCZT Scanners, 55mm Coupling System, Ships w/ Cables to Connect to all Physiological Support	\$10,164
PRA-3000-725 Positioning Receiver Assembly for GE eXplore, speCZT Scanners, 70mm Coupling System, Ships w/ Cables to Connect to all Physiological Support	\$10,164
PRA-4000 Positioning Receiver Assembly for MRI Applications, 70mm Coupling System, Interfaces the PAS Product Line of Machine Specific Assemblies	\$8652
PRA-8000 Positioning Receiver Assembly for TriFoil Triumph II, LabPET Solo, 70mm Coupling System, Ships w/ Cables to Connect to all Physiological Support	\$9438
PRA-9000 Positioning Receiver Assembly for Bruker Autopac, 70mm Coupling System, Multi-Modality	\$9184
PAS-2000 Positioning Assembly System for Agilent/GE 901, with 205/120 Gradient and 72/119 Volume AD Coil (Rapid), Individual Coil Spacers may be Required	\$9983
PAS-3000 Positioning Assembly System for RRI Systems, with BFG 200/115 Gradient and RFG 115/72 Coil, Individual Coil Spacers may be Required	\$9983
PAS-3000-BRU Positioning Assembly System for RRI Gradient Systems, with BFG 200/115 and Bruker 113 x 86 and 113 x 60 Coils, Individual Coils Spacers may be Required	\$9983
RWH-1550 Recirculating Water Heating System Configured for the PRA Line, Max Temp 42°C	\$726
RWH-1600 Recirculating Water Heater System Configured for the PRA Line, Max Temp 100°C	\$2009
EXT-1000R-70 Extension Assembly for Mediso Multi-Modality Scanner CT - PET, CT - SPECT, 70mm Coupling to 70mm, Approx. 362.00mm Length	\$8385
EXT-1000M-40 Extension Assembly for Mediso Multi-Modality Scanner, CT - PET, CT - SPECT, 70mm Coupling to 40mm, Approx. 438.0mm Length	\$8385
RU-7040 Reduction Union for SIEMENS, Inveon CT, Dedicated PET, and Inveon SPECT - CT Scanners, 70mm Coupling to 40mm Coupling	\$8385

THE AMS DESIGN WAS PARTIALLY FUNDED BY A PHASE 1, STTR GRANT, #R41-NS050141-01, NIH, NINDS

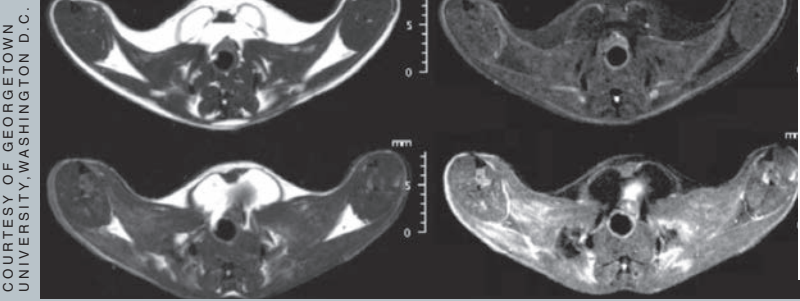
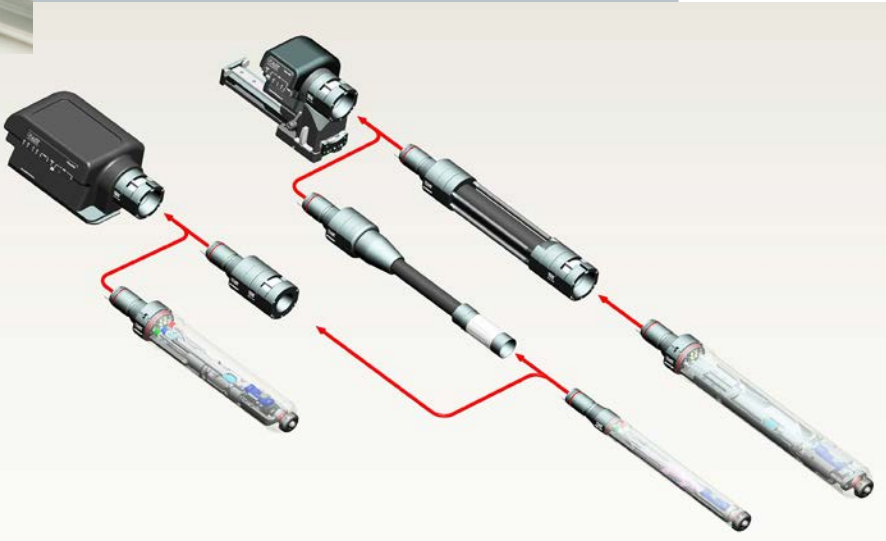


Plug and Scan System™

An innovative approach to the loading, handling and containment of animal models. This sytem allows for physiological monitoring, thermal regulation, and anesthesia delivery to the animal instantaneously. Scientists no longer need to connect and disconnect a plethora of tubing leads. Everything required for most studies is integrated into the core system component. These instruments epitomize the concept of Life Science research Tools “Desigend by Scientist for Scientists”.



COURTESY OF UNIFORMED SERVICES, WASHINGTON D. C.



COURTESY OF GEORGETOWN UNIVERSITY, WASHINGTON D. C.



COURTESY OF MOLECULAR IMAGING INC ANN ARBOR, MI

THE ORIGINAL METAL MATRICES

IN 1984

ASI Instruments introduced the revolutionary Rodent Brain Matrix which set new standards in durability and performance among tissue dissection aids. It was a triumph of "Imagineering". A problem solved by approaching the challenge with the curiosity of a scientist, the ingenuity of an inventor, and the logic of an engineer.

Though imitated by our competitors, these are "The Original" metal matrices and still the highest quality instrument on the market today. We truly have the largest selection of matrices on the planet. ASI coined the ORIGINAL product name, the name that has become the standard in labs around the world.... RODENT BRAIN MATRIX.



"THE BEST ANYWHERE" say scientists who are quickly obtaining repeatable sections as small as 1mm, day after day, year after year, even from lab to lab and at chilled temperatures.



**THE ORIGINAL
PATENTED
SELF-CLEANING SLOT
DESIGN
FOR EASY MAINTENANCE
AND CLEANABILITY**

**→ BRAIN
AND TISSUE KNIVES
FOR MATRICES**

BTK-130

Stainless Steel, 010" thick,
130mm long, pkg of 50

\$231



RODENT BRAIN MATRICES

RBM-1000C Rodent Brain Matrix Gerbil, Adult 70g, Coronal Sections	\$787
RBM-1000S Rodent Brain Matrix Gerbil, Adult 70g, Sagittal Sections	\$787
RBM-2000C Rodent Brain Matrix Mouse, Adult 30g, Coronal Sections	\$696
RBM-2000S Rodent Brain Matrix Mouse, Adult 30g, Sagittal Sections	\$696
RBM-3000C Rodent Brain Matrix Rat, Adult 125g-185g, Coronal Sections	\$696
RBM-3000S Rodent Brain Matrix Rat, Adult 125g-180g, Sagittal Sections	\$696
RBM-4000C Rodent Brain Matrix Rat, Adult 200g-400g, Coronal Sections	\$696
RBM-4000S Rodent Brain Matrix Rat, Adult 200g-400g, Sagittal Sections	\$696
RBM-4000DV Rodent Brain Matrix Rat, Adult 200g-400g, Dorsal-Ventral Sections	\$787
RBM-5000C Rodent Brain Matrix Guinea Pig, Adult 350g, Coronal Sections	\$787
RBM-5000S Rodent Brain Matrix Guinea Pig, Adult 350g, Sagittal Sections	\$787
RBM-6000C Rodent Brain Matrix Ferret, Adult, Coronal Sections	\$787
RBM-6000S Rodent Brain Matrix Ferret, Adult, Sagittal Sections	\$787
RBM-7000C Rodent Brain Matrix Rabbit, Adult, Coronal Sections	\$908
RBM-7000S Rodent Brain Matrix Rabbit, Adult, Sagittal Sections	\$908
RBM-8000C Rodent Brain Matrix Rat, Pup 30g, Coronal Sections	\$696
RBM-8000S Rodent Brain Matrix Rat, Pup 30g, Sagittal Sections	\$696
RBM-9000C Rodent Brain Matrix Hamster, Adult 100g, Coronal Sections	\$787
RBM-9000S Rodent Brain Matrix Hamster, Adult 100g, Sagittal Sections	\$787

OUR BRAIN MATRICES

ARE CAST IN
HIGH GRADE ZINC
USING THE
ACTUAL ANIMAL BRAIN
FOR UNSURPASSED CAVITY DEFINITION.
YOU CAN CHILL THEM, STERILIZE THEM, SUBJECT THEM TO
RIGOROUS DAILY USE AND STILL AFFORD THEM. OUR
ENGINEERING STAFF WILL WORK WITH YOU TO DEVELOP
CUSTOM MATRICES
TO MEET YOUR SPECIFIC LAB NEEDS.



SPECIAL MATRICES

RHM-4000C Rat Heart Matrix Adult, 1mm Slots	\$787
RHM-7000C Rabbit Heart Matrix Adult, 2mm Slots	\$908
MLM-2000C Mouse Lung Matrix Adult, 30g, 1mm Slots	\$787

LARGE BRAIN MATRICES

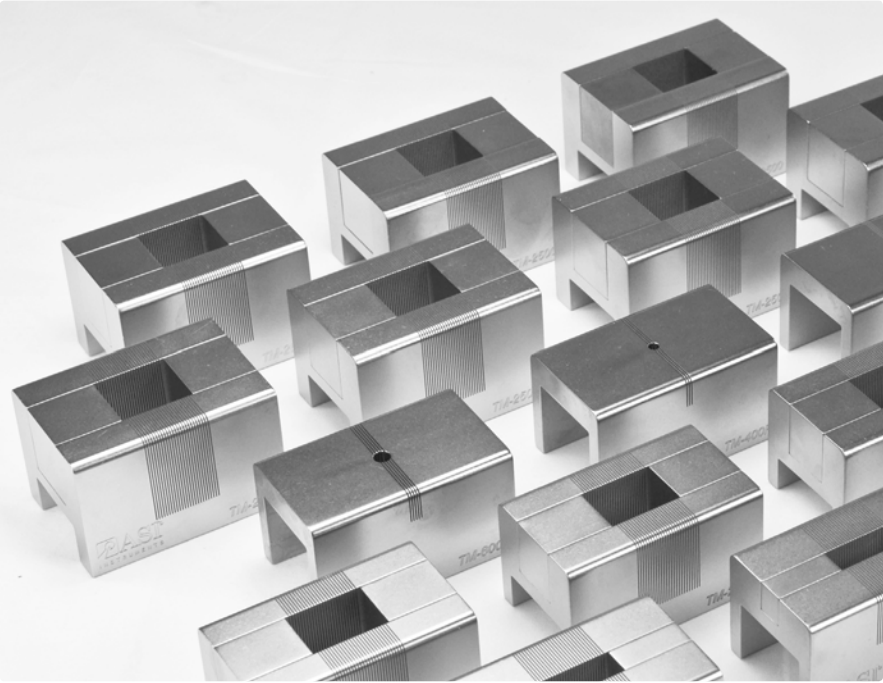


MBM-2000C Monkey Brain Matrix Rhesus, Adult, 2mm Slots	\$3630
MBM-2500C Monkey Brain Matrix Cynomolgus, Adult, 2mm Slots	\$3630
DBM-1000C Dog Brain Matrix Retriever, Adult, 2mm Slots	\$3630
CBM-2000C Cat Brain Matrix Adult, 2mm Slots	\$3630
PBM-3000C Pig Brain Matrix Sus Scrofa, Piglet, 2mm Slots	\$3630

ASI Instruments introduced the revolutionary Monkey Brain Matrix that set new standards in durability and performance among tissue dissection aids. All of our Large Brain Matrices are the highest quality instruments currently available, using the actual animal brain for unsurpassed cavity definition. These units are a must for the discriminating scientist.

TISSUE MATRICES

TM-1000 10mm x 10mm Chamber with 1mm Slices	\$787
TM-1500 15MM x 15MM Chamber with 1mm Slices	\$787
TM-400S 4mm Spherical Chamber	\$787
TM-600S 6mm Spherical Chamber	\$787
TM-2000 20mm x 20mm Chamber with 1mm Slices	\$787
TM-2500 25mm x 25mm Chamber with 1mm Slices	\$787
TM-1000V 6mm Dia, V Shaped Chamber with 1mm Slices	\$787
TM-1500V 12mm Dia, V Shaped Chamber with 1mm Slices	\$787



TISSUE MATRICES
ARE CAST IN HIGH GRADE
ALUMINUM ALLOY
USING THE
ACTUAL ANIMAL BRAIN
FOR UNSURPASSED
CAVITY DEFINITION.

Soon after the introduction of the Rodent Brain Matrix product line, ASI Instruments introduced a secondary revolutionary dissection product group the Tissue Matrix. It was developed to aid in the free hand dissection of tissue samples other than brain tissue. Researchers have used this product for eye dissection, cow liver dissection, spinal cord dissection, and core punch reduction to 1mm sections. These units live up to the standards of durability and performance among tissue dissection aids.

DESIGNED BY SCIENTISTS FOR SCIENTISTS

U.S.
Pat.

- 4,885,845 Micropipettes and the Fabrication Thereof
- 5,370,842 Pipette Puller
- 6,415,679 Manual Drive for Positioning Precision Instruments
- 6,363,750 Automatic Pipette Puller and Forge
- 6,451,262 Dissection Specimen Holder
- 6,513,259 Slide Assembly with Adjustable Resistance
- 7,414,403 Imaging Machine / MRI Positioning Assembly for Magnet Coils and Specimens
- 7,534,067 Coupling Assembly for Animal Management System
- 7,784,429 Contoured Specimen Holder for Imaging Machines
- 7,865,226 Specimen Positioning System for Imaging Machines
- 8,322,310 Specimen Alignment and Head Holding System for Imaging Machines
- 8,327,807 Catheter and Seal Assembly
- 8,578,889 Specimen Alignment and Head Holding System for Imaging Machines
- 74,390,88 ASI Instruments & Design

VISIT Asi-Instruments.com

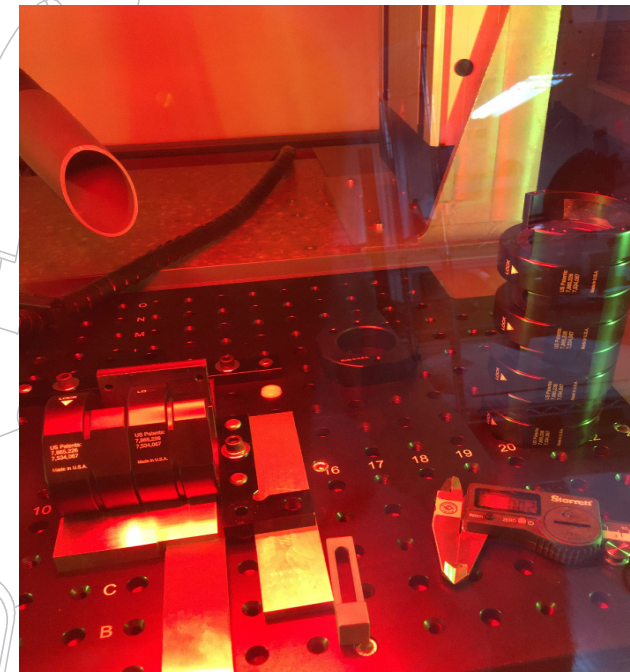
FOR PUBLISHED DOCUMENTS CITING OUR INSTRUMENTATION

CONNECT
TO VIEW A6 S4-4 2752713
BASE - PLATE

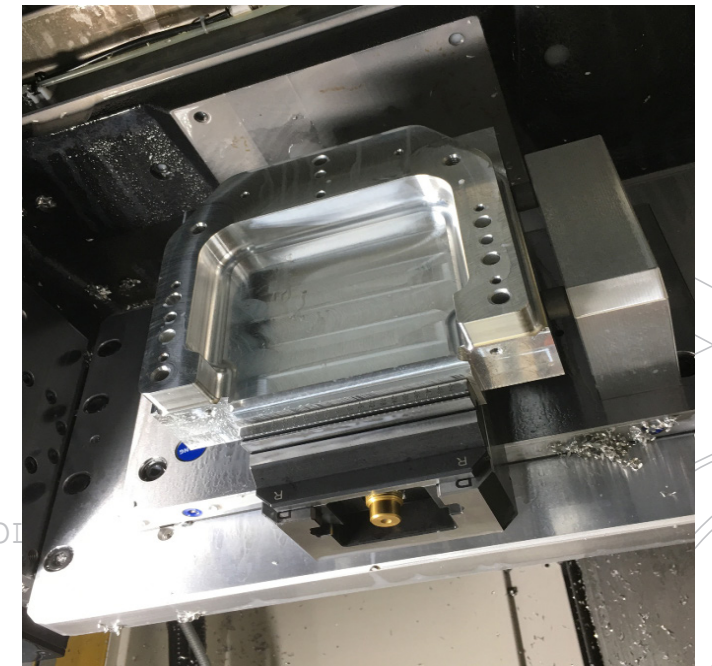
VIEW A

2 ASM 0278
REC - DOCK

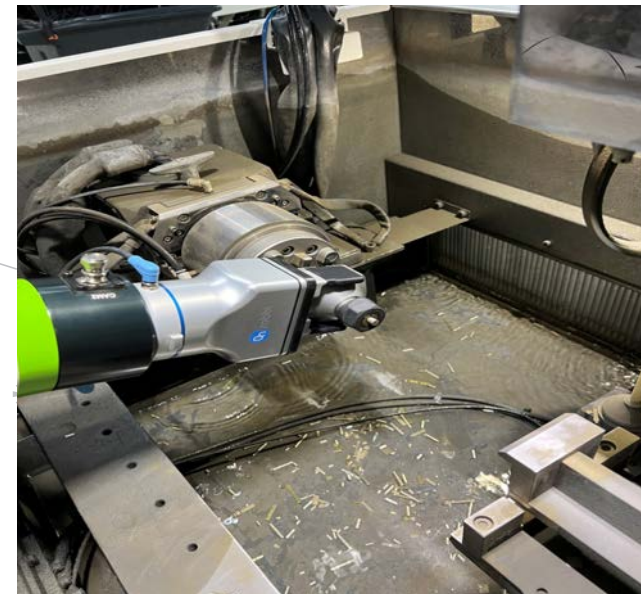
7 S0-2 2752717 HOUSING CONTROL



Laser Etching



Manufacturing of Stereotaxic "C-Frame"



Robotic Arm use in EDM Machining / Product Production



Custom Designed Products

8 S4-5 2753382 BRKT - REC POSITIONING MTG

15 (6) 5-40 PN -1/4" x 3/4"



ASI INSTRUMENTS

WE INVENT

WE DESIGN

WE MANUFACTURE

STEREOTAXIC INSTRUMENTS

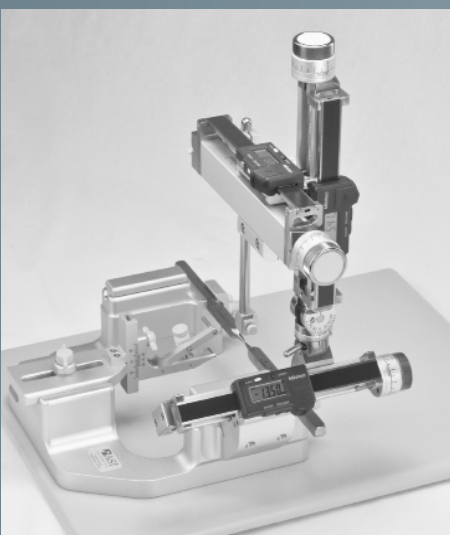
ASI Instruments is dedicated to engineering products that satisfy the needs of everyday Research Scientists. With the introduction of the SAS-4100 we brought this commitment into reality, presenting a product that is flexible but also practical. The surgery platform is built with the subtle nuances that guarantee reliability and enhances the entire research experience. We stand apart from our contemporaries.

ASI was the first company to offer the inclusion of **Calibrated Knobs** on all axes which provide researchers with greater ease and more accurate readings than the vernier scales commonly found on other designs.

Advanced Slide Technology is integrated into the complete line of Stereotaxic Manipulators. This technology provides researchers with unparalleled precision, with a user-friendly interface.

Our innovative **Tilt-and-Swivel Mechanism** includes 90° of tilt and 360° of swivel, and is operated by an intelligently designed single-lever locking mechanism. By far, the easiest to use universal joint available and locks better than our competitors' designs.

The **Open "C" Frame** gives users a more pronounced sense of openness as well as a depth of access to research specimens. In comparison to raised frame designs, the open frame serves as a more reliable platform. Our one piece design insures alignment precision.



SAS-4100

Small Animal System Includes:
1mm-4100 Micromanipulator,
50µm Resolution

\$5191

SAS-5100

Small Animal System Includes:
1mm-5100 Micromanipulator,
10µm Resolution

\$7054



SAS-4120

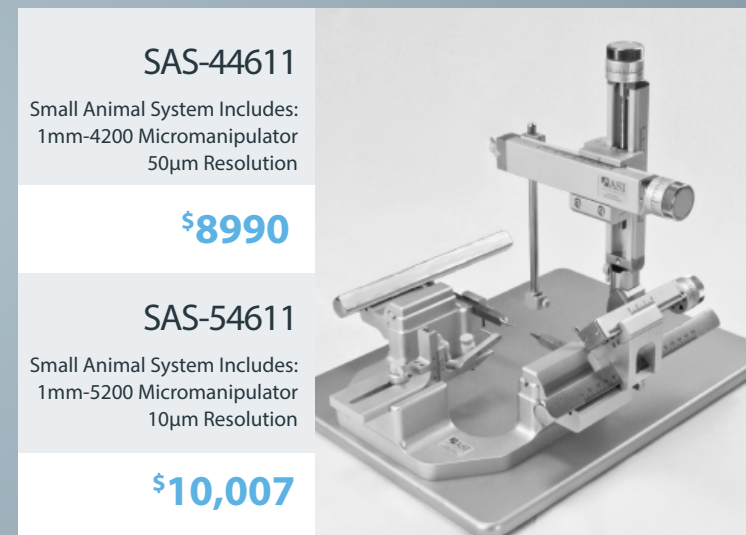
Small Animal System Includes:
2mm-4100 Micromanipulators,
50µm Resolution

\$8349

SAS-5120

Small Animal System Includes:
2mm-5100 Micromanipulators,
10µm Resolution

\$11,035



SAS-44611

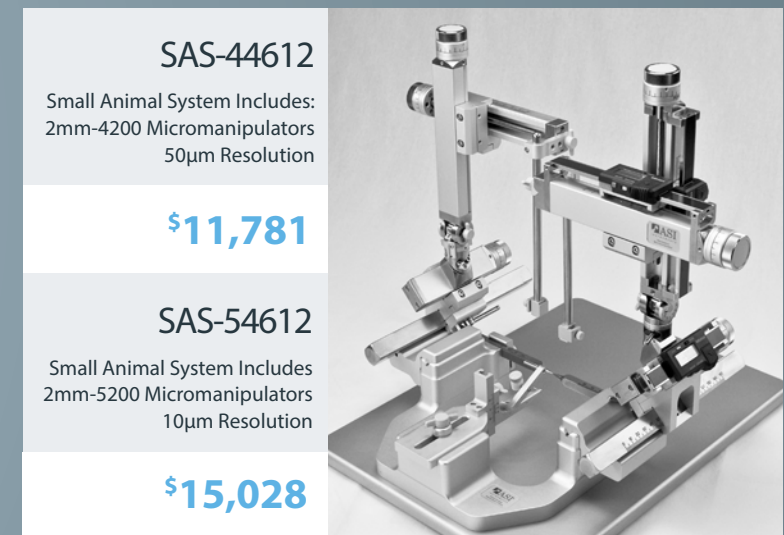
Small Animal System Includes:
1mm-4200 Micromanipulator
50µm Resolution

\$8990

SAS-54611

Small Animal System Includes:
1mm-5200 Micromanipulator
10µm Resolution

\$10,007



SAS-44612

Small Animal System Includes:
2mm-4200 Micromanipulators
50µm Resolution

\$11,781

SAS-54612

Small Animal System Includes:
2mm-5200 Micromanipulators
10µm Resolution

\$15,028

* Shown w/ optional SDA-3000 digital readout

* Shown w/ optional SDA-3000 digital readout

➔ **DIGITAL**
READOUTS ARE
AVAILABLE
FOR ALL STEREOTAXIC SYSTEMS

SDA-3000
\$2795



Unparalleled precision for the
discriminating research scientist.



STEREOTAXIC ACCESSORIES

USED ON 18.7MM OR 21.65MM SQUARE AP BARS. DENOTE SIZE WHEN ORDERING

MM-4100 80mm ML/DV/AP, Tilt Swivel, 50µm Resolution, 3mm Lead Screw, Includes Mounting	\$4840	 EH-600 (PH-300)	
MM-4200 80mm ML/DV, 30mm AP, Tilt Swivel, 3mm per Revolution Lead Screws, 50µm Resolution via Calibrated Knobs	\$4417		
MM-4300 80mm ML/DV, Tilt Swivel, 3mm per Revolution Lead Screws, 50µm Resolution via Calibrated Knobs	\$4102		
MM-4400 80mm ML/DV, 30mm AP, 3mm per Revolution Lead Screws, 50µm Resolution via Calibrated Knobs	\$3303		
MM-5100 80mm ML/DV/AP, Tilt Swivel, 10µm Resolution, 1mm Lead Screw, Includes Mounting	\$5542		
MM-5200 80mm ML/DV, 30mm AP, Tilt Swivel, 1mm per Revolution Lead Screws, 10µm Resolution via Calibrated Knobs	\$5639	EH-600 Electrode Holder, Fine Stimulation	\$496
MM-5300 80mm ML/DV , Tilt Swivel, 1mm per Revolution Lead Screws, 10µm Resolution via Calibrated Knobs	\$5639	PH-300 Pipette Holder, 1mm - 3mm Pipettes, Sterotaxic	\$496
MM-5400 80mm ML/DV, 30mm AP, Extended Travel for Large Animal Stereotaxic Frames, 1mm per Revolution Lead Screws, 10µm Resolution via Calibrated Knobs	\$4465	PH-375 Pipette Holder, 1mm-3mm Pipettes	\$278
MM-8000 80mm ML/DV, 80mm AP, Tilt Swivel Extended AP Travel	\$6171	SH-800 Syringe Holder, with .3125" Dia x 3.0" Lg Rod	\$333
MM-8000/3 80mm ML/DV, 80mm AP, Tilt Swivel, Extended AP Travel, 50µm Resolution	\$5009	SH-800L Syringe Holder, with .3125" Dia x 6.0" Lg Rod	\$333
SF-4100 Small Animal Stereotaxic Frame, 10" x 15" Dupont Corian Base	\$3666	GP-500 General Purpose Holder, .5" with 12.7mm Dia	\$333
SF-1450AP Small Animal Stereotaxic Frame, 12" x 16" Alum. Base, 2 AP Bars, w /100mm Calibration, 18.7mm Square (Avail. as 21.6mm Sq) w/ Head Holder and Ear Bars, Denote Bar Size	\$5639	DH-1907 Drill Holder, holds up to 19.07mm Dia	\$503
RA-100 Rodent Adapter, for Adult Rat	\$648	DH-1000 Drill Holder, Holds up to 1.0" Dia	\$503
RA-100G Rodent Gas Adapter, for Adult Rat and Mouse	\$648	MS-600 Micromanipulator Stand Base	\$714
RA-200 Rodent Adapter, for Mice and Neonatal Rat	\$648	AD-312 Adaptor / Electrode Holder, .3125 Dia	\$145
EB-918 Ear Bars, Standard, 18° Tip	\$399	RC-101 Stereotaxic Instrument Recalibration Service	\$666
EB-927 Ear Bars, A-Traumatic, 27° Tip	\$399	RAM-100 Rat Anesthesia Mask, Fits RA-100G	\$532
EB-945 Ear Bars, A-Traumatic, 45° Tip for Mouse	\$399	MAM-200 Mouse Anesthesia Mask, Fits RA-100G	\$532
EH-100 Electrode Holder, Standard	\$266	SDA-3000 Digital Readouts, 3 Axes, .01mm Resolution, Zero Reset, Battery Powered, Factory Install Only	\$2795
MR-2461 Mouse Riser, 25.0mm	\$225		

MICROMANIPULATORS AND ACCESSORIES



MM-1001HP R 1-Axis Manipulator (Fine) 10µm Resolution, RH High Precision, Linear Bearing	\$520	
MM-1001 R 1-Axis Manipulator, RH Dual Control, X-Axis (Coarse and Fine), 5µm Resolution, High Precision, Linear Bearing	\$666	MMS-150 Bar Stand, Micromanipulator w/ Magnetic Mtg, 12.0mm Mtg Bar, Max Height 200mm, Tilt Adjustment \$448
MM-1002 R 2-Axis Manipulator (Fine), 10µm Resolution, RH High Precision, Linear Bearing	\$1198	MMS-200 Bar Stand, Micromanipulator w/ Table Top Mtg, 12.0mm Mtg Bar, Max Height 200mm, Tilt Adjustment \$375
MM-1003 R 3-Axis Manipulator (Fine), 10µm Micron Resolution, RH Precision, Linear Bearing	\$2505	MMS-300R Stand, Micromanipulator, Tilting Base w/ Table Top Mtg \$532
MM-3001 R 1-Axis Manipulator (Coarse), 50µm Resolution, RH Standard Precision	\$399	MMS-300L Stand, Micromanipulator, Tilting Base w/ Table Top Mtg \$532
MM-3001HP R 1-Axis Manipulator (Coarse), 50µm Resolution, RH High Precision, Linear Bearing	\$454	MM-325R Stand, Micromanipulator, Tilting Base w/ Magnetic Mtg \$532
MM-3002 R 2-Axis Manipulator (Coarse), 50µm Resolution, RH High Precision, Linear Bearing	\$1053	MMS-325L Stand, Micromanipulator, Tilting Base w/ Magnetic Mtg \$454
MM-3003 R 3-Axis Manipulator (Coarse), 50µm Resolution, RH High Precision, Linear Bearing	\$1452	MMS-400 Riser, Micromanipulator, Accessory Mtg, 3" Height \$303
MM-3013 R 3-Axis Manipulator, Y&Z (Coarse), 50µm Resolution, RH X-Axis (Fine), 10µm Resolution, High Precision, Linear Bearing	\$1755	MMS-425 Riser, Micromanipulator, Accessory Mtg, 6" Height \$303
MM-3103 R 3-Axis Manipulator, Y&Z (Coarse), 50µm Resolution, RH Dual Control, X-Axis (Coarse & Fine), 5µm Resolution, High Precision, Linear Bearing	\$1755	MMS-500 Rotational Base, Micromanipulator Mtg \$375
MM-3303 R 3-Axis Manipulator, RH Dual Control, X, Y & Z-Axes (Coarse & Fine), 5µm Resolution, High Precision, Linear Bearing	\$2553	EH-100MM Electrode Holder, Standard \$266
C-12 Clamp, Micromanipulator, for 12.00mm Diameter	\$67	EH-600MM Electrode Holder, Fine Stimulation Electrode \$411
C-10 Clamp, Micromanipulator, for 10.00mm Diameter	\$67	PH-300MM Pipette Holder, 1mm-3mm Pipettes \$411
C-127 Clamp, Micromanipulator, for .500 inch Diameter	\$67	SH-800MM Syringe Holder \$333
MMS-100 Bar Stand, Micromanipulator w/ Breadboard Mtg, 12.0mm Mtg Bar, Max Height 200mm, Tilt Adjustment	\$303	GP-500MM General Purpose Holder, .5" (12.7mm) Diameter \$333
MMS-125 Bar Stand, Micromanipulator w/ Breadboard Mtg, 12.0mm Mtg Bar, Max Height 300mm, Tilt Adjustment	\$375	DH-1907MM Drill Holder, Holds up to 19.07mm Diameter \$503

MICROMANIPULATORS SHIPPED W/ 12.00MM CLAMP, WHEN ORDERING REPLACE LETTER "R" WITH LETTER "L" FOR LEFT HANDED VEERSON

MULTI-BARREL PIPETTES

PRODUCING THE HIGHEST QUALITY PRODUCTS THROUGH THE HIGHEST QUALITY PROCESS



EACH BARREL COMES FITTED WITH A 100 MICRON GLASS FILAMENT FUSED TO THE SIDE TO AID TIP FILLING

P-3 Three Barrel Micropipette Blanks, Box of 50	\$479
P-5 Five Barrel Micropipette Blanks, Box of 50	\$479
P-7 Seven Barrel Micropipette Blanks, Box of 50	\$721
LD-303 Contact Leads for P-3, Assembly	\$121
LD-305 Contact Leads for P-5, Assembly	\$121
LD-307 Contact Leads for P-7, Assembly	\$121
PE-300 Pressure Injection Kit for P-3, P-5, P-7 with 10 Fittings and 10ft Silicone Tubing	\$121

Just grab the PATENTED solid glass ball, heat and pull. Our computerized manufacturing process produces the highest quality blank configurations that you can pull with unsurpassed repeatability. Each barrel is fitted with a pre-attached 100 micron glass filament which aides in the tip filling process.

The quality control begins before manufacturing, when all glass components are pre-cleaned in a high intensity ultrasonic cleaner and rinsed with heated, de-ionized water. These pipettes then pass a stringent quality control process. Each lot is randomly tested to insure uniformity. This PATENTED process allows the researcher to produce more uniform electrodes and collect more consistent research data, day in and day out.



MICRODRIVE SYSTEM



THIS UNIT is perfect for positioning probes / electrodes for patch clamps, microdialysis, microinjection, or any other application which requires stable remote submicron movement. In-vivo or in-vitro, this microprocessor controlled system can handle all of your positioning needs.

This system is designed to minimize bench space via the easy to use hand held pendant control with readout. With it's ability to add on micropositioners (also controlled by the hand held pendant), there is no need to purchase additional central processing units or additional pendants.

Our Microdrive System...designed with your lab's future needs in mind.

AMAZING PRODUCT

Providing researchers with an economical and flexible answer to their positioning needs

\$8,985

MD-2500 | Microdrive System, Single Axis DC Servo Motor Control, 1µm Resolution (Smallest Step Size), Hand Held Pendant Remote (Expendable to 4 Axes)

\$3,718

MP-2510 | Additional Axis - Micropositioner and Controller

SHOP ONLINE@Asi-Instruments.com

Shop Online.

Asi-Instruments.com

ALSO →

EMAIL

Sales@Asi-Instruments.com

FAX

(586) 756-9737

TELEPHONE

(800) 531-1105 or (586) 756-1222

MAIL

12900 E. 10 MILE RD WARREN, MI 48089 USA SALES DEPARTMENT

Prices subject to change without notice



All Products are
Designed and
Built in the USA



is a registered trademark of ASI INSTRUMENTS INC.
All other trademarks are the property of their
respective owners.

061929_01 Printed in USA

Copyright 2019, ASI Instruments